

MANUAL

alfda air purifier ALR230

PLEASE NOTE:

Before using remove the foil packing from the filters inside.



Thank you for purchasing this product. The product is a unit of air purifier fitted with high efficiency filters. To get familiarized with your new product, please read the manual before the start up carefully and retain this booklet for future reference.

Service-Contact

alfda Artikel für Allergiker Handels-GmbH

Carl-Spitzweg-Str. 3

D-50127 Bergheim

Tel.: 0 22 71 - 98 03 09

Fax: 0 22 71 - 98 02 37

eMail: verkauf@alfda.de

Web: www.alfda.de

our WEEE-Reg.-Nr. : DE 87819261

Date: June 2015 – subject to modifications

A manual in German language could be get by download:

<http://www.allergiker-shop-alfda.de/katalog/downloads/Manual-DE--ALR230.pdf>

Table of contents

- | | |
|----------------------------------|------------------------------------|
| 1. Short notes for the use | 10. Filter equipment |
| 2. Cautions concerning operation | 11. Failure and solutions |
| 3. Function and property | 12. Warranty conditions |
| 4. Technical data | 13. Information on proper disposal |
| 5. Components | |
| 6. Placement | |
| 7. Operation | |
| 8. Installation of the filter | |
| 9. Maintenance | |

1. Short notes for the use

The air purifier alfa ALR230 is equipped with a simple to use timer. Alternatively, it can be controlled with an external conventional time switch. For effective air cleaning, we recommend to proceed as follows:

- Ventilate extensively 2 - 3 times daily, and then turn on the air cleaner.
- We recommend to use the ionization in the sleeping area only short term as this sensitive people can cause bad sleep.
- In order to achieve an optimal air cleaning, the air cleaner may be operated at least as long as a 2-time purification of the room air volume is achieved.

Examples

Room size	<u>running time at minimum</u>	fan speed
~ 12 m ² / 30 m ³	~ 45 Min.	1
~12 m ² / 30 m ³	~ 20 Min.	3
~20 m ² / 50 m ³	~ 70 Min.	1
~20 m ² / 50 m ³	~ 30 Min.	3
~40 m ² / 100 m ³	~ 90 Min.	2
~40 m ² / 100 m ³	~ 60 Min.	3

2. Cautions concerning operation

- Please unpack the filter before use, otherwise there will be no filter effect.
- Never block the air intake and the air outlet of the unit.
- Place the air purifier not in the area of heatings, stoves, etc. and avoid grease aerosols, heat and splash in and at the unit.
- Please unplug the power cord when the unit is not used for a long time.
- To clean the housing do not use water or detergent to avoid damage.

3. Function and property

Pre filter (black foam) – with antibacterial cover for general filtration. It is capable of removing big suspended particulates in the air.

HIMOP filter (High Efficiency Multi oxidation pottery and Porcelain Granule): HIMOP is a kind of high efficiency grain ceramics with strong oxidizing property. It is honeycombed with passages which can capture all kinds of organic pollutant in the air and break it down to water and Carbon dioxide. It's the most advanced filtration technology to remove the indoor formaldehyde. It can remove 93.4% formaldehyde, 99.9% benzene and toluene in 3 hours. (Testing by "Institute for environmental health and related product safety Chinese center for disease control and prevention" according to Chinese national standard (GB/T18801-2002).)

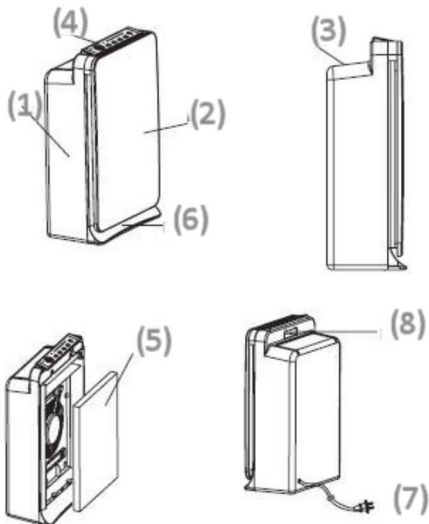
HEPA filter (High Efficiency Particulate Airfilter) of High efficiency. Removes smoke and dust of 0.3 micron. The filtrating rate is as high as 99%.

Fresh air ionizer: Negative charges ions effectively refresh the indoor air.

4. Technical Data

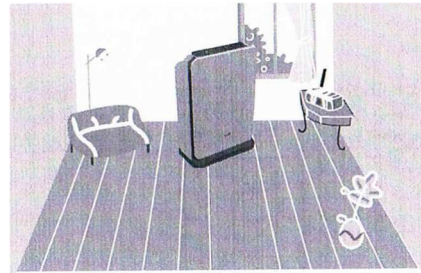
Modell	ALR230
Voltage	220-240V 50 Hz
Power ca.	Max. 58 Watt
Power Standby	1,3 Watt
Air flow min./max. ca.	98 / 232 m ³ /h
Noise level min./max. ca.	35 / 49 dB(A)
Net weight without filter-set ca.	4,5 kg
Dimension (LxBxH)	328x168x523 mm
Applicable area max.	45 m ² / 112 m ³

5. Komponenten



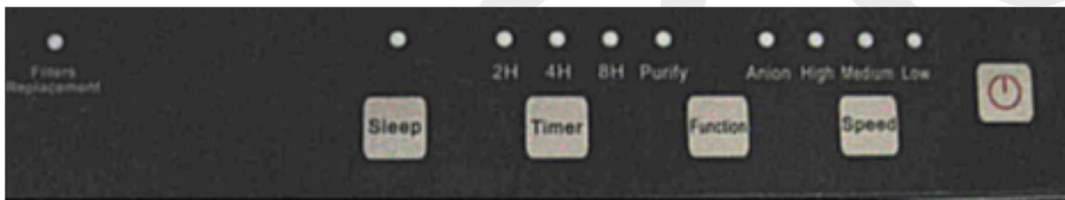
- | | |
|-------------------|---------------------|
| (1) Air inlet | (5) Filter Set |
| (2) Front panel | (6) Pedestal |
| (3) Air outlet | (7) Power cable |
| (4) Control panel | (8) Carrying handle |

6. Placement



- Min. 10 cm distance to the wall
- Do not place nearby curtains
- Place the unit where air circulation is good.
- Place the unit near the source of the polluted air for more effective results

IMPOTANT: The air cleaner is not suitable to filter oily, greasy air .

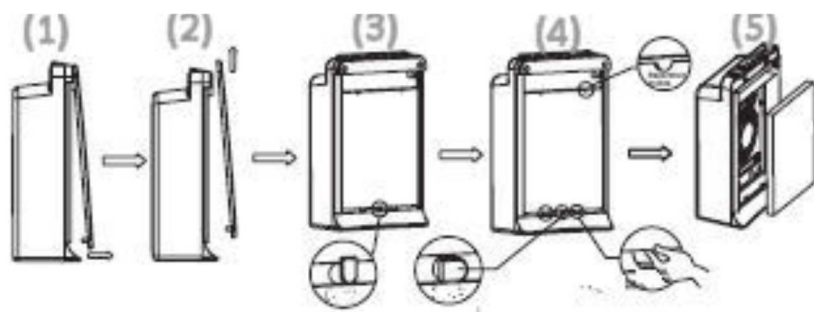


Control panel

7. Operation

- 1. Connect the power:** Connect the power, the unit will start to work when it is plugged in. The initial mode will be medium speed (with ionizer function).
- 2. On/Off Button:** Press the button, the unit will be switched off/on. The unit is running with medium speed of the fan and switched on Ion. You can change it by using the buttons.
- 3. Fan Speed Button:** Press the button for selection of fan speed.High – medium – Low. The selected speed will be shown by LED.
- 4. Ionizer Button:** Press the button for Ionizer, the indicator will be shown on the control panel, indicating the selection preferred.
- 5. Time setting Button:** To enable the timer function, press the button. The selected time 2, 4 or 8 hours will be shown by LED. The unit will be switched off after end of the selected time.
- 6. External timer:** It can be connected with external timer to set the working time. The unit has to be switched on. The initial mode when switched on is middle fan speed and Ion on.. The external timer is not included in the scope of delivery.
- 7. SLEEP MODE.** If the sleep mode is selected, the fan will be running with low speed.
- 8. Filter replacement:** After a running time of 4000 hours the LED will remind to proof the filter set. It may be changed to a new one. If you change the filter, press the SLEEP-Button for 5 seconds to reset the counting.

8. Installation of the filter



The filter element include the pre-filter, HIMOP-filter and HEPA-filter

1. Open the front panel by pull it at the lower part.
2. Lift the front panel
3. **Turn lock to 90°.**
4. Remove filter as shown.
5. Insert the filter set with the black foam pre-filter to the outside – at first the top side and when push the lower part into the casing.

9. Maintenance

Please disconnect the unit with power for maintenance to avoid electric shock. Never clean the filters with water to avoid changes to the shape of the filters.

10. Filter replacement

The standard lifespan of the filters is about 4000 hours running time. However, it will also depend on the way of usage and the surroundings air pollution level.

The filters are recommended to be cleaned using a vacuum cleaner after 1 to 2 months of usage.

The filters are also recommended to be changed after being not used for longer than 18 months, unless the filters are wrapped airtight in a film. Please contact the authorized retailers for purchase of replacement filters.

11. Failure and Solutions

Please refer to the following before contacting Customer Service Centre for service / repair:

Unit not operational: Please check whether the power plug is properly inserted into the socket.

The running mode can not be changed: If the unit is used by an external timer, the last mode will be selected. To change it, the unit has to be switched off and then switched on.

Unable to remove odor or dirt in the air. Loud operation noise level: Please make sure, that air intake and air outlet are not blocked and clean them carefully with a vacuum cleaner. Take the filter unit out of the air cleaner and clean the pre-filter und filter-set carefully with a vacuum cleaner or replace the filter-set by a new one.

12. Warranty Conditions

Our products are subject to strict quality control. If your air purifier should still not functioning properly, we regret this and ask you to contact the authorized customer service.

The warranty period is 2 years from date of purchase. The guarantee is for the country to which the air purifier was delivered from the dealer. Devices, that have material and workmanship defects are repaired or replaced at our discretion during the warranty period. Exchanged devices or parts of devices become our property. It does not extend the warranty period nor does it initiate a new warranty in transition.

Warranty claims must be submitted immediately after becoming aware of the defect within the warranty period.

In order to claim the warranty service involves the following steps:

Please contact by e-mail (verkauf@alfda.de) the customer service and describe the problem. Please note the invoice number and your name in this e-mail.

If a return is agreed upon, send the unit securely packaged at your expense to our service. Include a copy of the invoice on which you note the defect. If the defect is under our guarantee, you will get a repaired or new device send on our costs.

Warranty claims are excluded for damage caused by:

- Misusage or improper treatment
- unusable conditions (moisture, fat, heat, over voltage, dust, etc.)
- Failure to follow the safety precautions applicable to the device
- Not following the instructions
- The use of force (drop, shock, impact, dump down, e.g.)
- Procedures that were not performed by the address of our authorized service
- Unauthorized attempts to repair
- Submission in not safety packaging.

Furthermore, no subject to any warranty are batteries and filter cartridges as these are consumable parts.

From the scope of the guarantee for not (or no longer) detected defects or damage to the equipment, we fix a fee. For a custom quote, please contact our customer service. In this case shipping and handling charges are at your expense.

13. Information on prosper disposal



Old electronic equipment is no household waste!

In accordance with Directive 2002/96/EG and national laws electrical and electronic equipment must be separately from general household waste using the sites designated by local authorities. This can happen when you buy a similar device, or by delivery to an authorized collection site for recycling waste electrical and electronic equipment.